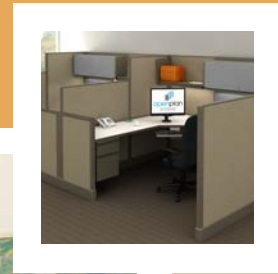




Open Plan, Open Minds.

## OPS2 Sustainable Series





- ★ Save up to 40% off the cost of new
- ★ Shipped in 3 weeks

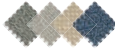
## OPS2 Sustainable Series

The OPS2 Sustainable Series, featuring our Promotional, C2 and C2L lines, shows our proud roots in remanufacturing.

- The top cap is plastic, a two piece rail system where the slot channel is always black and the rail shell is the same as the trim color.
- The 4-circuit power outlets are located 10 inches from the end of the base on each side, two duplex receptacles on each side of 30"- 60" panel and one on each side of a 24" panel.
- Separate jumpers are used to connect power from one panel to another.

Modular Walls, OPS2 tile system, full and partial glazed panels, open panels, table tops, and lateral files (except for LF2-30-FP and LF2-30-SP) are not included in the Sustainable Series.





# Promo

Open Plan Systems

With the largest selection within the OPS Sustainable Series, Promo is a perfect combination of value and variety. Choose from our 18 fabrics, 5 work surfaces, 3 trim/edge colors and 2 base colors, without missing out on our Promotional pricing.

### Fabrics



### Work Surfaces



### Base



### Trim



### Edge



Note: These edge finishes are in addition to the work surface matches denoted with the \$ symbol.

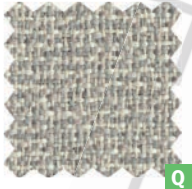
**Q** Eligible for Quick Ship when combined with Quick Ship options and finishes. Quick Ship orders are limited to \$150,000 list price or less for shipment in 2 weeks.

# C2

## Fabrics



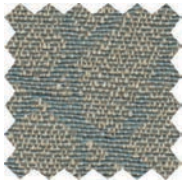
Brown's Island



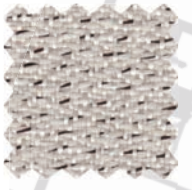
Canal Walk



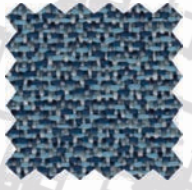
Carytown



Church Hill



Colonial Downs



James River

## Work Surfaces



Antique White §



Folkstone Grey §



Hardrock Maple §

## Base



BU



MT



BU



HF



MT

## Trim

## Edge



BU



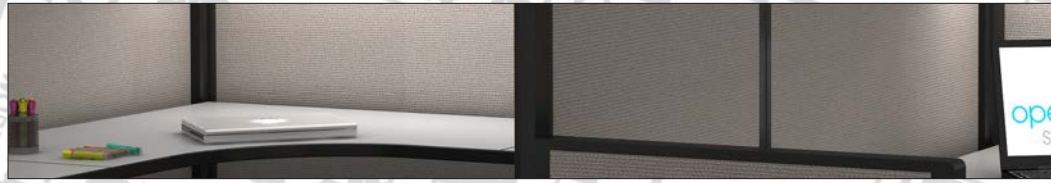
HF



MT

Note: These edge finishes are in addition to the work surface matches denoted with the § symbol.

**q** Eligible for Quick Ship when combined with Quick Ship options and finishes. Quick Ship orders are limited to \$150,000 list price or less for shipment in 2 weeks.



- ★ Save up to 45% off the cost of new
- ★ Shipped in 3 weeks





Do you like the pricing of used products, but hate the limitations of buying As-Is? C2 offers the security -- UL listing, warranty, among others -- at a price point comparable to As-Is! But unlike As-Is, C2 offers you choices between fabrics, finishes, and options such as glass stackers. It is the best value out there for your money!



# C2 Limited

C2 Limited offers the biggest savings and lowest prices in the Sustainable Series. Competitive to "As Is" workstations, but provides new product with remanufactured panels, overheads and connectors. Items not listed will be priced under their appropriate program.



- ★ Our deepest savings
- ★ Shipped in 2 weeks

## Fabrics



OPS Grey Sky

OPS Pebble Creek

## Work Surfaces

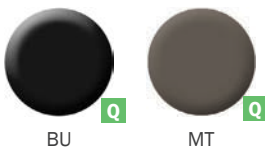


Antique White §

Folkstone Grey §

Hardrock Maple §

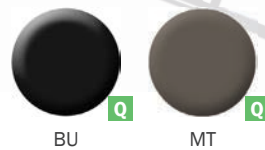
## Base



BU

MT

## Trim



BU

MT

## Edge



BU

MT

Note: These edge finishes are in addition to the work surface matches denoted with the § symbol.

**Q** Eligible for Quick Ship when combined with Quick Ship options and finishes. Quick Ship and C2 Limited orders are limited to \$150,000 list price or less for shipment in 2 weeks.



## C2 Limited Availability

Connectors	List Price
PTP48	\$23
PTP62	\$23
PTP80	\$25
2WY53A2	\$126
2WY67A2	\$137
2WY85A2	\$155
3WY53A2	\$222
3WY67A2	\$242
3WY85A2	\$274
4WY53A2	\$282
4WY67A2	\$311
4WY85A2	\$348
ECP53A2	\$54
ECP67A2	\$56
ECP85A2	\$60
TC48	\$51
TC62	\$56
TC80	\$61
COH	\$26
VHF	\$26

Panels	List Price
F5324	\$419
F5336	\$557
F5348	\$640
A6724	\$487
A6736	\$633
A6748	\$718
A8524	\$575
A8536	\$739
A8548	\$835

Powered Panels	List Price
F5324P	\$674
F5336P	\$812
F5348P	\$894
A6724P	\$742
A6736P	\$888
A6748P	\$974
A8524P	\$831
A8536P	\$994
A8548P	\$1,092

Components	List Price
SHH2412A	\$113
SHH3612A	\$125
SHH4812A	\$139
SH2412A	\$155
SH3612A	\$168
SH4812A	\$184
FDU2412A	\$354
FDU3612A	\$408
FDU4812A	\$460
TB24A	\$130
TB36A	\$146
TB48A	\$162
TLR24	\$218
TLR48	\$247

Pedestals	List Price
BF-FP	\$545
BBF-FP-MPB	\$545
BBF-SP	\$605
FF-SP	\$605

Power	List Price
REC	\$39
PEK4	\$450
CF2 & CF4	\$650

### Quick Ship Notes:

- ★ Shipped in 2 weeks.\*
- ★ Must combine Quick Ship items for Quick Ship pricing.
- ★ Flipper doors available in fabric or painted.
- ★ Glass and fabric stackers.
- ★ Full pull lateral files and square pull or full pull pedestals.
- ★ Seating and Casegoods included.
- ★ Panels available in all AO2 widths and heights and in fabric acoustical style only
- ★ Modular Walls, OPS2 Tile System, full and partial glazed panels, open panels, and table tops are not included in the Quick Ship program.

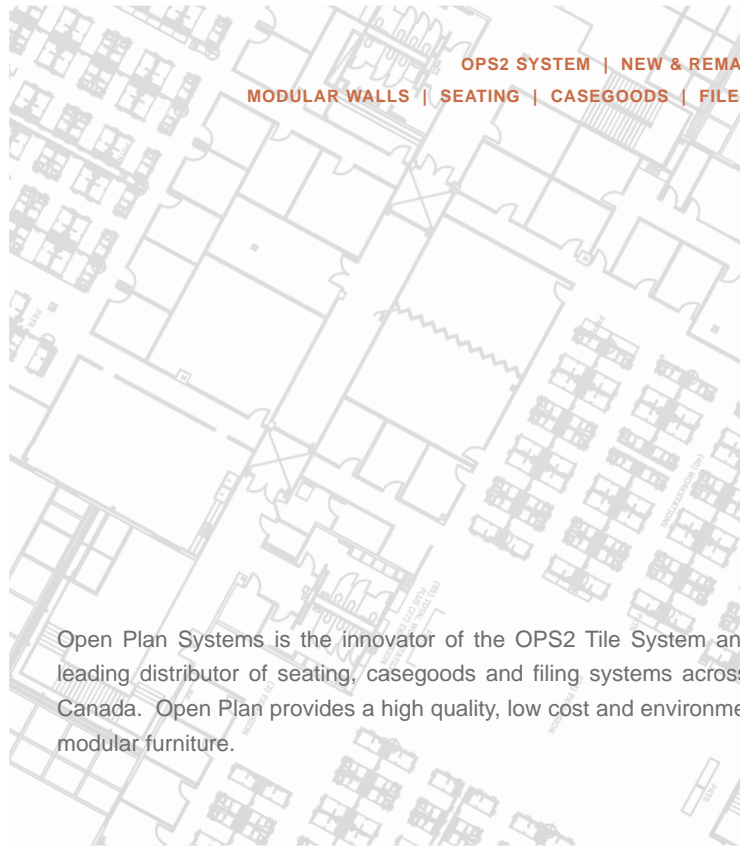
\* Quick Ship and C2 Limited orders are limited to \$150,000 list price or less for shipment in 2 weeks. Prices are subject to change.



Open Plan, Open Minds.



OPS2 SYSTEM | NEW & REMANUFACTURED | OPS2 TILE  
MODULAR WALLS | SEATING | CASEGOODS | FILE STORAGE & ACCESSORIES



Open Plan Systems is the innovator of the OPS2 Tile System and Modular Walls, and a leading distributor of seating, casegoods and filing systems across the United States and Canada. Open Plan provides a high quality, low cost and environmentally friendly source for modular furniture.

© 2012 Open Plan Systems

P: 888.869.4681

WWW.OPENPLAN.COM

SALES@OPENPLAN.COM



4700 Deepwater Terminal Rd  
Richmond, VA 23234



All content is subject to change.  
Scan QR code for the most current revision, or  
visit [www.openplan.com](http://www.openplan.com)

10.05.2012/OPS Sustainable/2500